



SMART MOBILITY SOLUTIONS



PRODUCT CATALOG MAY 2024



MADE FOR INDIA

Blackcat has the most modern multiple manufacturing base in India with a strong in-house R&D centre. That is how each product is thoroughly customised for Indian conditions for optimum performance.

OEMS TRUST BLACKCAT

Each Blackcat product goes through stringent quality parameters under the sharp eyes of its qualified technicians. No wonder Blackcat products carry the trust of more than 15 international OEMs.





ABOUT US



PIONEER IN AUTOMOTIVE ELECTRONIC ACCESSORIES. SINCE 1993



Car security system makers take a hit

Smaller players bear the brunt of adverse publicity as their sales nosedive.

THE ADVERSE PUBLICITY for remote security has taken its toll in the aftermath of the Mumbai floods last year and the recent accidents in Delhi, wherein passengers were trapped inside their vehicles, has resulted in a massive slump in sales for small players, especially after market tests.

While big manufacturers like Akshay, Sipsys and Hitech have added new electronic security packages to their product line, smaller players like Hitech, Chaudhary and Parag, Black Cat, Soundbytes, remote control bike alarms, remote locks, etc. have not had people believe them as much as they had in the past. Some even require dropping drastically in sales for Black Cat, Chaudhary and Parag.

Black Cat Soundbytes is remote control bike alarms, remote locks, etc. have not had people believe them as much as they had in the past. Some even require dropping drastically in sales for Black Cat, Chaudhary and Parag.

Black Cat Soundbytes is remote control bike alarms, remote locks, etc. have not had people believe them as much as they had in the past. Some even require dropping drastically in sales for Black Cat, Chaudhary and Parag.

UNLOCKING THE CENTRAL TRUTH

It is not the central lock system that is the problem, it is the way it is installed. The central lock system is not a magic solution. It is a complex system that requires professional installation. If it is not installed correctly, it can be a liability. The central lock system is not a magic solution. It is a complex system that requires professional installation. If it is not installed correctly, it can be a liability.



PROUD TO BE ASSOCIATED WITH 12+ OEM CUSTOMERS

PASSENGER VEHICLE OEMS



COMMERCIAL VEHICLE OEMS

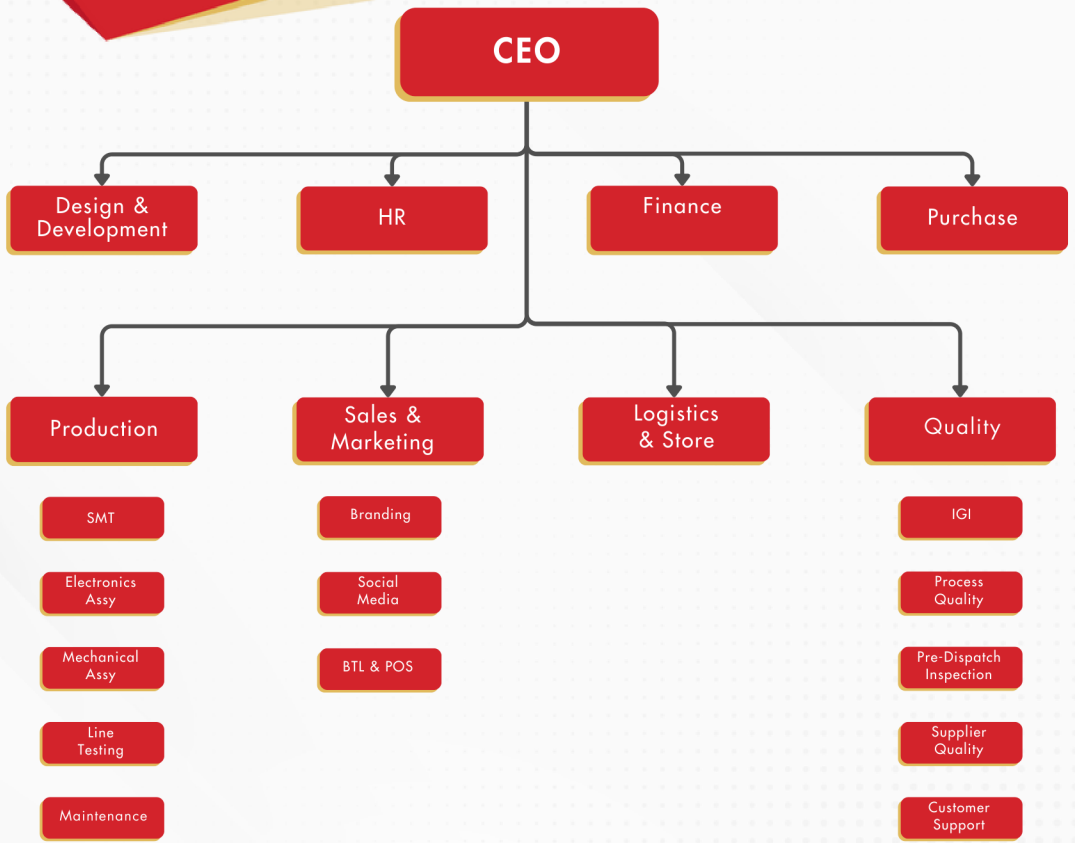


BUS/ TEMPO BODY-BUILDER



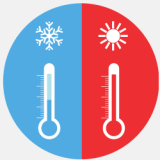
LOGOS ARE THE PROPERTY OF THE RESPECTIVE TRADEMARK OWNERS.
THEY HAVE BEEN USED ONLY FOR REFERENCE.

2 FACTORIES, 200+ EMPLOYEES



OEM STANDARDS TESTING FOR RIGOROUS INDIAN ENVIRONMENT

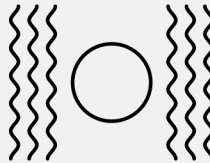
Products undergo 32 quality tests across 8 categories



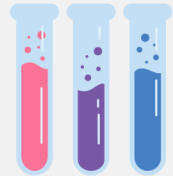
High, low temp
-20 C to +70 C



Humidity test



Vibration test



Salt spray
corrosion test



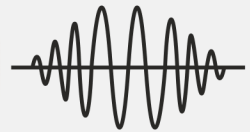
Short circuit,
reverse polarity



High, low
voltage test



Dust spray
test



Electromagnetic
induction test

STRINGENT QUALITY TESTING TO ENSURE ZERO DEFECTS



✓ Production Facility

✓ Financial Stability

✓ Quality System Certification

✓ Manpower

✓ Testing Facility

✓ Product Certification

✓ Supplier audit

✓ Joint problem solving

✓ Supplier upgradation

✓ Quality check-lists

✓ Trained engineers for IQC

✓ FIFO implementation at IQC stage itself

✓ Product-wise check-lists

✓ 100% in-process testing for PCBs

✓ Increasing degree of automation

✓ Trained engineers

✓ 4-hours full-load burn-in test

✓ 100% EOLT for all products

✓ Increasing degree of automation

✓ Trained engineers

✓ Product-wise check-lists

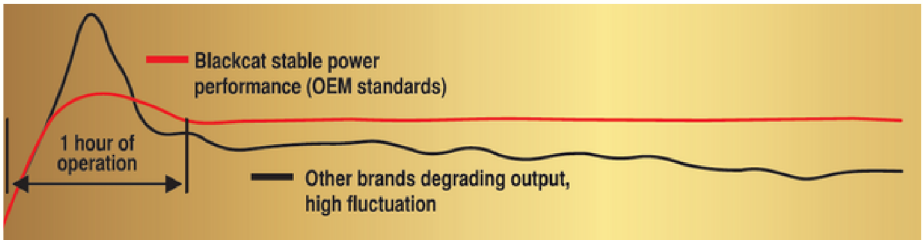


LED BULBS



LED HEADLAMP/ FOG LAMP BULBS

Promise delivered!



Aviation grade Aluminum Alloy

OEM standard testing

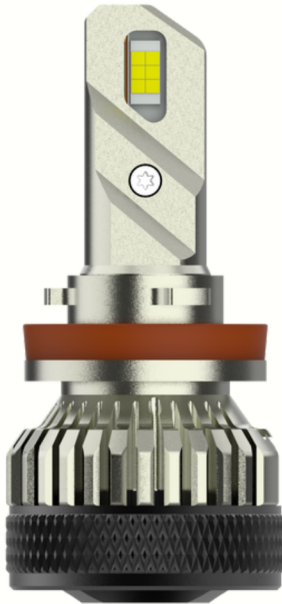
OEM standard focused beam

2 years warranty





W140



Technical Specs

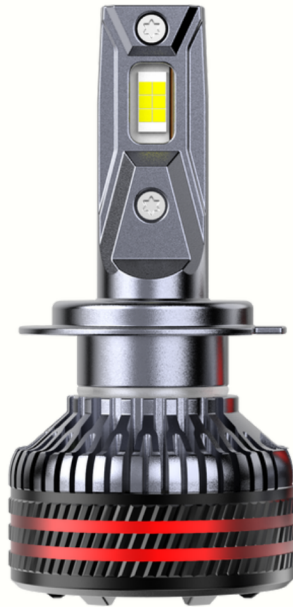
- Reliability tests: As per OEM standard
- IP68 waterproof
- Colour: 6500K Ultra-white
- Operating voltage: 12V, 24V
- Brightness: 15,000 Lumen
- Steady Power: 90W

Available in:

H1	H18
H4	H27
H7	9005
H8	9012



W180



Technical Specs

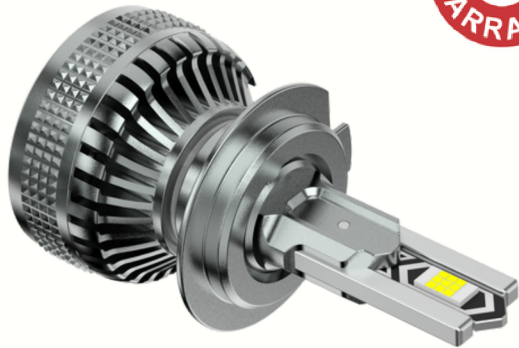
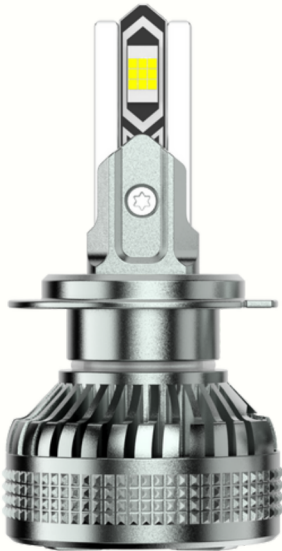
- Reliability tests: As per OEM standard
- IP68 waterproof
- Colour: 6500K Ultra-white
- Operating voltage: 12V, 24V
- Brightness: 16,000 Lumen
- Steady Power: 120W

Available in:

H1	H8
H4	9005
H7	9012



W210



Technical Specs

- Reliability tests: As per OEM standard
- IP68 waterproof
- Colour: 6500K Ultra-white
- Operating voltage: 12V, 24V
- Brightness: 18,000 Lumen
- Steady Power: 140W

Available in:

H1	H19
H4	H27
H7	9005
H8	9012



W225



Technical Specs

- Reliability tests: As per OEM standard
- IP68 waterproof
- Colour: 6500K Ultra-white
- Operating voltage: 12V, 24V
- Brightness: 19,000 Lumen
- Steady Power: 150W

Available in:

H1	H19
H4	H27
H7	9005
H8	9012



BLACKCAT
SMART MOBILITY SOLUTIONS

MOBILE CHARGERS



**Over-Current
Protection**



**Over-voltage
Protection**



**Voltage-Detection
Protection**



**Critical-Voltage
Protection**



**Over-Temperature
Protection**



**Over-Lead
Protection**



**Short-Circuit
Protection**



**Over-Charge
Protection**



PD-QC TURBOCHARGE PRO

38W



OVERHEAT
PROTECTION



80% IN
15 MINUTES



USB-C & USB-A



QC & PD
TECHNOLOGY

Why select PD-QC Turbocharge Pro ?

- ▶ Sleek, elegant design with premium-looking backlit LED illumination.
- ▶ USB port, C-type port.
- ▶ Cutting-edge tech with USB-C Power Delivery and Qualcomm.
- ▶ Operating voltage: 12V, 24V.
- ▶ *Under test conditions.



JIFFY 30W



FAST CHARGING



5,000 CYCLES TESTED



8 PROTECTIONS

Why select Jiffy 30W charger?

- ▶ Sleek, elegant design with premium-looking backlit LED illumination
- ▶ Market leading product
- ▶ USB port, C-type port
- ▶ Operating current: up to 4.8A
- ▶ Operating voltage: 12V, 24V



CV PD-QC CHARGER

38W



OVERHEAT PROTECTION



SUITABLE FOR BUSES, TEMPO TRAVELLERS, SEDAN/ SUV REAR SEAT



USB-C & USB-A



QC & PD TECHNOLOGY

Why select CV PD-QC fast charger?

- Flat design enables easy installation where hole/ availability is an issue
- Sleek, elegant design with premium-looking blue LED illumination
- Market-leading product for commercial vehicles
- USB-A and USB-C ports
- Cutting-edge tech with USB-C Power Delivery and Qualcomm
- Operating voltage: 12V, 24V
- Customised wiring harness available (if needed)



CV CHARGER FLAT

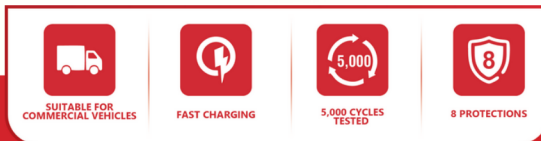


Why select Blackcat CV Charger Flat?

- Flat design enables easy installation in tight slots as well
- Sleek, elegant design with premium-looking backlit blue LED
- Market-leading product for commercial vehicles
- Dual USB port
- Operating current: up to 3.1A
- Operating voltage: 12V, 24V
- Customized wiring harness available (if needed)



CV CHARGER FLAT



Why select Blackcat CV Charger?

- Concealed design, replaces standard cigarette lighter socket in the vehicle
- Market-leading product for commercial vehicles
- Dual USB port
- Operating current: up to 3.1A
- Operating voltage: 12V, 24V
- Customised wiring harness available (if needed)



RESQ SAFETY CHARGER



SUITABLE FOR CARS



FAST CHARGING



5,000 CYCLES TESTED



8 PROTECTIONS

Why select Blackcat ResQ?

- Patented product
- Safety charger - seatbelt cutter, Tungsten Carbide tip concealed hammer
- Dual USB port
- Operating current: up to 3.1A
- Operating voltage: 12V, 24V



4-IN-1 PD CABLE



60W TURBO
FAST CHARGING



LAPTOP CHARGING



60W



1.2 Metre
Cable Length



Quick Charging



High Quality
Connectors

Why select Blackcat 4-in-1 Braided Cable?

- This Universal cable can simultaneously charge Android, iOS, and Type C devices.
- This Universal cable is made of High-quality Nylon material makes it resistant to fraying and wear-related damage, more flexible and durable
- Cable is Tangle Free, Rugged, Quick charging, universally compatible, Flexible and of High Quality



3-IN-1 BRAIDED CABLE



Genuine accessory approved by Indian and International SUV OEMs



2.1A
CARRYING CAPACITY



1.2 METRE
CABLE LENGTH



QUICK CHARGING



HIGH QUALITY
CONNECTORS

Why select Blackcat 3-in-1 Braided Cable?

- This universal cable can simultaneously charge Android, iOS, and Type C devices.
- This universal cable is made of high-quality nylon material, making it resistant to fraying and wear-related damage, more flexible and durable.
- The 3-in-1 charging cable is tangle-free, rugged, quick charging, universally compatible, flexible, and of high quality.
- It has a sleek, highly durable, premium metal housing with a nylon braided cable.

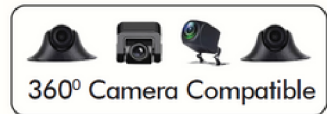


BLACKCAT
SMART MOBILITY SOLUTIONS

ANDROID INFOTAINMENT



T5R - AND003/006



Key Specs

- Processor: T5 Cortex A53 4+4 Core 1.5GHz
- RAM: 2GB; Memory: 32GB
- Screen size: 9" / 10.1"



Q-LED SCREEN



BLUETOOTH 5.1



SPEAKER OUTPUT: 4*45 WATT



RUGGED TESTING: -20°C TO +70°C



32 EQ SEGMENT DSP



T5R - AND004



Turbo Performance



360° Camera Compatible



Front & Rear
DVR Compatible



Wireless
Apple CarPlay



Wireless
android auto



ANDROID 10

Key Specs

- Processor: T5 Cortex A53 4+4 Core 1.5GHz
- RAM: 4GB; Memory: 64GB
- Screen size: 9"



Q-LED SCREEN



BLUETOOTH
5.1



SPEAKER OUTPUT:
4*45 WATT



RUGGED TESTING:
-20°C TO +70°C



32 EQ
SEGMENT DSP



TS10 - AND007



- Processor: TS10 Octacore 7862 1.8GHz
- RAM: 4GB; Memory: 64GB

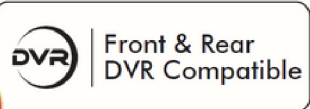
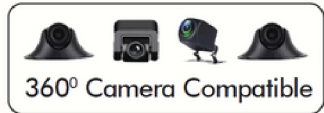


Turbo Performance

- ✓ INSTANT TOUCH RESPONSE
- ✓ QUICK APP SWITCH
- ✓ STABLE OPERATION
- ✓ MORE FUN WITH TECH



- ✓ Voice operated
- ✓ Powered by Google Assistant AI
- ✓ 9 Indian languages



9" Q-LED SCREEN



BLUETOOTH 5.1



SPEAKER OUTPUT: 4*50 WATT



RUGGED TESTING: -20°C TO +70°C



48 EQ SEGMENT DSP



BLACKCAT
SMART MOBILITY SOLUTIONS

TYRE INFLATORS



HERCULES²



2X Cylinder Power



PREMIUM COPPER WINDING MOTOR FOR LONG LIFE



NO JACK REQUIRED TO INFLATE



STURDY METAL BODY



THICK, BRAIDED, HOSE

Why select Hercules²?

- Powerful 150W twin-cylinder inflator: fills up SUV/Sedan R15 tyre in under 2 minutes
- Twin cylinder design fills air in half the time
- Rubber pads for low-noise operation
- Threaded Spring Valve for faster & leak-proof inflation
- Superior build quality that inflates 4 tires without over-heating
- Sturdy metal body
- 1 Year Warranty with Lifelong customer support.



HERCULES X



PREMIUM COPPER WINDING MOTOR FOR LONG LIFE

NO JACK REQUIRED TO INFLATE

QUICK HEAT DISSIPATION

SLICK, LIGHTWEIGHT & EASY TO STORE

THICK, BRAIDED, HEAT PROOF

Why select Hercules-X?

- ▶ 150W powerful inflator
- ▶ Threaded Spring Valve for faster & leak-proof inflation
- ▶ 10ft (3.3m) long wire
- ▶ Bright LED torch-light
- ▶ Superior build quality ensures continuous inflation of all 4 tyres, without risk of overheating/motor failure
- ▶ 1 Year Warranty with Lifelong customer support.



HERCULES SMART



Why select Hercules Smart?

- Compact and lightweight
- Threaded Spring Valve for faster & leak-proof inflation
- 10ft (3.3m) long wire
- Bright LED torch-light
- Superior build quality ensures continuous inflation of all 4 tyres, without risk of overheating/motor failure
- 1 Year Warranty with Lifelong customer support.



HERCULES



 <p>PREMIUM COPPER WINDING MOTOR FOR LONG LIFE</p>	 <p>NO JACK REQUIRED TO INFLATE.</p>	 <p>METAL STURDY METAL BODY</p>	 <p>THICK, BRAIDED HOSE</p>
--	--	---	---

Why select Hercules?

- Rubber pads for low noise operation
- Threaded Spring Valve for faster & leak-proof inflation
- Superior build quality that inflates 4 tyres without over-heating
- Sturdy Metal Body
- 1 Year Warranty with Lifelong customer support.
- Analogue Gauge



BLACKCAT
SMART MOBILITY SOLUTIONS

SECURITY SYSTEMS



CENTRAL LOCKING SYSTEM NSA



Why select Blackcat Central Locking Systems?

- India's 1st remote locking car security system company
- Over 4 lakh cars secured - since 1993
- High decibel alarm 110dB
- NSA 4D: suitable for all cars
- NSA 1D: suitable for cars where driver door lock controls locking/ unlocking of other door locks
- OEM-style remote designs
- 3 years warranty



BLACKCAT
SMART MOBILITY SOLUTIONS

CAR-FRIDGE



AT-18



Why select AT-18

- ▶ Smart engineering and efficient manufacturing ensure affordable pricing.
- ▶ Serves dual purpose of cooling as well as heating food and beverages
- ▶ Can cool up to 30°C below car's cabin temperature (up to 0°C) and heats up to +65°C.
- ▶ Can fit bottles of 750ml or 6 cans of 500ml.
- ▶ Connect the fridge to vehicle's cigarette lighter socket (12V or 24V DC) or our domestic plug point (230V AC), set the mode to Cooling or eating.No installation needed.
- ▶ The fridge consumes even lesser power than headlight lamps. Additionally, it comes with an intelligent battery protection mechanism which ensures safety from over-draining your vehicle battery.
- ▶ Ideal for Cars/SUVs



Genuine accessory approved by Indian and International SUV OEMs



PROFESSIONAL COOLING PRODUCT, DESIGNED FOR THE INDIAN CONDITIONS.

FRIDGE-FREEZER

LOW POWER CONSUMPTION

OPERATES FROM A CAR CIGARETTE LIGHTER SOCKET

Why select CB-18?

- Smart engineering and efficient manufacturing ensure affordable pricing
- Can deep freeze up to -18°C regardless of the outside temperature
- Connect the fridge to vehicle's cigarette lighter socket (12V or 24V DC) or our domestic plug point (230V AC)
- Consumes power lesser than a headlight lamp
- Genuine accessory approved by European OEM car manufacturer

Suitable for cars, camping, cold chain delivery of meat, ice cream, dairy products, storing and transporting medical kits, bio samples, blood bags, plasma samples, vaccines, etc.



BLACKCAT
SMART MOBILITY SOLUTIONS

REVERSE CAMERA



AHD STRAWHAT CAMERA



✓ Number plate mounting

✓ 170°/120° viewing angle

✓ IP68 protection for dust and water

✓ Night-vision with photosensitive chip



AHD BUMPER CAMERA



- ✓ Seamless mounting with bumper
- ✓ 170°/120° viewing angle
- ✓ IP68 protection for dust and water
- ✓ Night-vision with photosensitive chip



LED CAM F



- ✓ Seamless mounting with bumper
- ✓ 120° viewing angle
- ✓ IP68 protection for dust and water
- ✓ Night-vision with photosensitive chip



BUS CAMERA



120°
Viewing angle



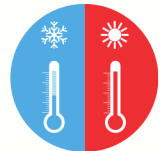
CAMERA TECH SPECS	
Camera type	IRLED
Camera resolution	640x480
Camera night vision supported (Y/N)	Y
Camera waterproofing	IP67
Lens viewing angle	120°



MONITORS



FLIP-DOWN MONITOR



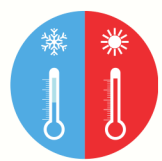
Rugged testing
-20°C to +70°C

TECHNICAL SPECIFICATION	
Operating Voltage	DC 12V
Current	2.0 ± 0.1A
Video Formats	PAL/NTSC
Aspect Ratio	16:9
Resolution	1366X768 RGB





7" MONITOR



Rugged testing
-20°C to +70°C

VIDEO MONITOR TECH SPECS	
Monitor type	TFT LCD (standalone)
Mounting type	Vehicle Dashboard
Auto-brightness control	N
Anti-glare auto-dimming (Y/N)	N
Modes supported	PAL & NTSC
PAL & NTSC auto-switching	Y
Resolution	1440x234 dots





9899-0555-88



info@blackcat.in



Bajaj Autotronix India
D-64, Udyog Vihar Ph-6,
Sector-37, Gurgaon-122001

Follow us for latest product launches:

