



# SMART MOBILITY SOLUTIONS



## PRODUCT CATALOG MAY 2024



### MADE FOR INDIA

Blackcat has the most modern multiple manufacturing base in India with a strong in-house R&D centre. That is how each product is thoroughly customised for Indian conditions for optimum performance.

### OEMS TRUST BLACKCAT

Each Blackcat product goes through stringent quality parameters under the sharp eyes of its qualified technicians. No wonder Blackcat products carry the trust of more than 15 international OEMs.





# ABOUT US

---





# PIONEER IN AUTOMOTIVE ELECTRONIC ACCESSORIES. SINCE 1993



**AUTO EXPO '96**  
**The vigilant eye, everywhere, all the time**

**Install BLACKCAT**

**चोरों को रोके, गाड़ी की सुरक्षा**

**Unlocking the Central Truth**

**Car security system makers take a hit**

**Smaller players bear the brunt of adverse publicity as their sales nosedive.**

**THE ADVERSE PUBLICITY** the recent security black cat case in the aftermath of the Mumbai floods last year and the recent accidents in Delhi, where passengers were trapped inside their vehicles, has resulted in a massive slump in the demand for car security systems, especially after monsoons.

While big manufacturers like Honeywell, Nissan and Honda have ridden over this crisis, smaller players have seen their sales plummet. Praveen Bhat of ITCI Communications says,

"The main concern is about the adverse publicity that has had people being hesitant to install these devices. There are also reports of dropping casualties from the Blackcat, Chaudhary and Durga."

Black cat brand has a more control like alarm, more security than the market, especially after the Mumbai floods. In the north, accidents in Delhi have led to a decline in the demand for car security systems. Bhat, however, is confident that there are no dire consequences.

Praveen Bhat, "Honeywell" says, "Honeywell has made people hesitant to buy central locking devices."

**UNLOCKING THE CENTRAL TRUTH**

Car security systems are not as foolproof as they are advertised to be. In fact, they are often vulnerable to theft and tampering. The Blackcat system, for example, is a well-known brand, but it has been shown to be vulnerable to theft and tampering. The Blackcat system is a well-known brand, but it has been shown to be vulnerable to theft and tampering.



# PROUD TO BE ASSOCIATED WITH 12+ OEM CUSTOMERS

## PASSENGER VEHICLE OEMS



## COMMERCIAL VEHICLE OEMS

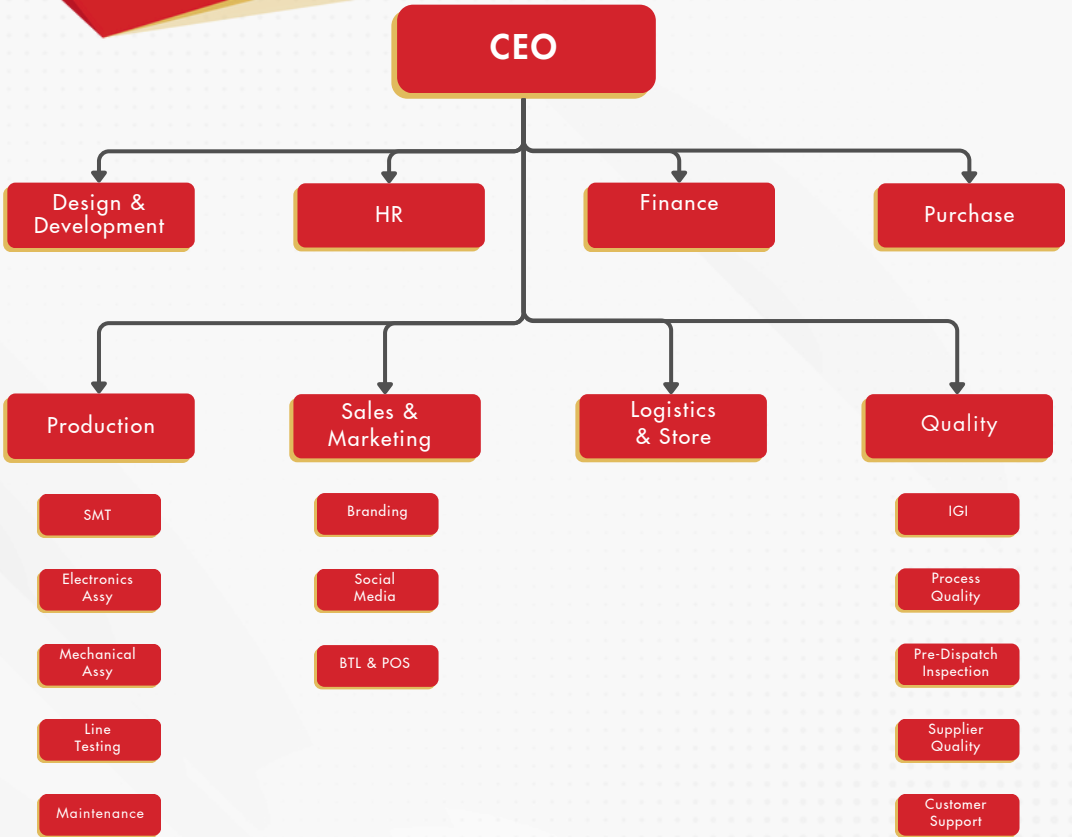


## BUS/ TEMPO BODY-BUILDER



LOGOS ARE THE PROPERTY OF THE RESPECTIVE TRADEMARK OWNERS.  
THEY HAVE BEEN USED ONLY FOR REFERENCE.

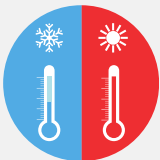
# 2 FACTORIES, 200+ EMPLOYEES





# OEM STANDARDS TESTING FOR RIGOROUS INDIAN ENVIRONMENT

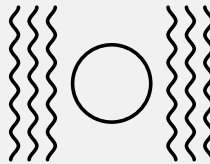
Products undergo 32 quality tests across 8 categories



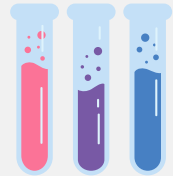
High, low temp  
-20 C to +70 C



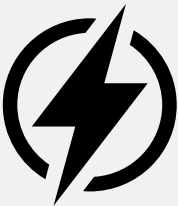
Humidity test



Vibration test



Salt spray  
corrosion test



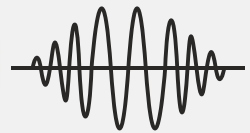
Short circuit,  
reverse polarity



High, low  
voltage test



Dust spray  
test



Electromagnetic  
induction test

# STRINGENT QUALITY TESTING TO ENSURE ZERO DEFECTS



✓ Production Facility

✓ Financial Stability

✓ Quality System Certification

✓ Manpower

✓ Testing Facility

✓ Product Certification

✓ Supplier audit

✓ Joint problem solving

✓ Supplier upgradation

✓ Quality check-lists

✓ Trained engineers for IQC

✓ FIFO implementation at IQC stage itself

✓ Product-wise check-lists

✓ 100% in-process testing for PCBs

✓ Increasing degree of automation

✓ Trained engineers

✓ 4-hours full-load burn-in test

✓ 100% EOLT for all products

✓ Increasing degree of automation

✓ Trained engineers

✓ Product-wise check-lists



**BLACKCAT.**  
SMART MOBILITY SOLUTIONS

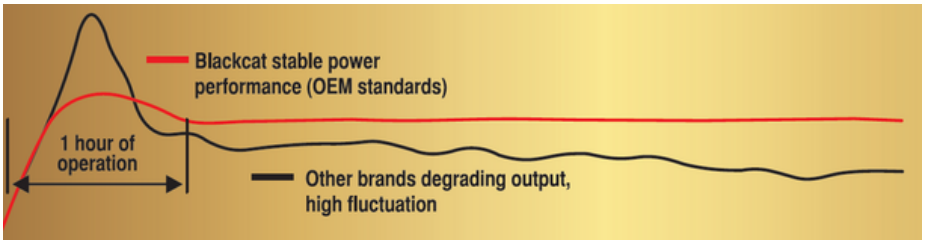
# LED BULBS





# LED HEADLAMP/ FOG LAMP BULBS

**Promise delivered!**



**Aviation grade Aluminum Alloy**

**OEM standard testing**

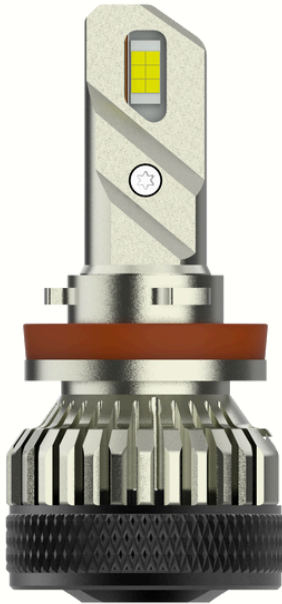
**OEM standard focused beam**

**2 years warranty**





## W140



### Technical Specs

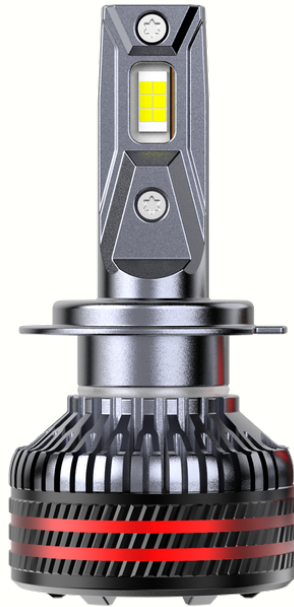
- Reliability tests: As per OEM standard
- IP68 waterproof
- Colour: 6500K Ultra-white
- Operating voltage: 12V, 24V
- Brightness: 15,000 Lumen
- Steady Power: 90W

### Available in:

|    |      |
|----|------|
| H1 | H18  |
| H4 | H27  |
| H7 | 9005 |
| H8 | 9012 |



## W180



### Technical Specs

- Reliability tests: As per OEM standard
- IP68 waterproof
- Colour: 6500K Ultra-white
- Operating voltage: 12V, 24V
- Brightness: 16,000 Lumen
- Steady Power: 120W

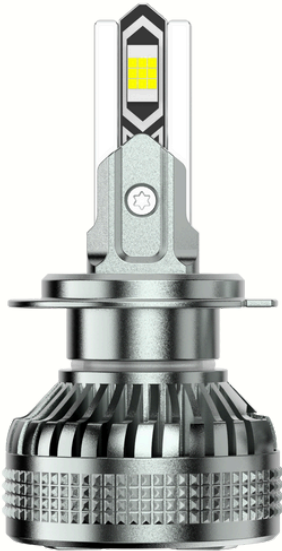
### Available in:

|    |      |
|----|------|
| H1 | H8   |
| H4 | 9005 |
| H7 | 9012 |





# W210



## Technical Specs

- Reliability tests: As per OEM standard
- IP68 waterproof
- Colour: 6500K Ultra-white
- Operating voltage: 12V, 24V
- Brightness: 18,000 Lumen
- Steady Power: 140W

## Available in:

|    |      |
|----|------|
| H1 | H19  |
| H4 | H27  |
| H7 | 9005 |
| H8 | 9012 |



## W225



### Technical Specs

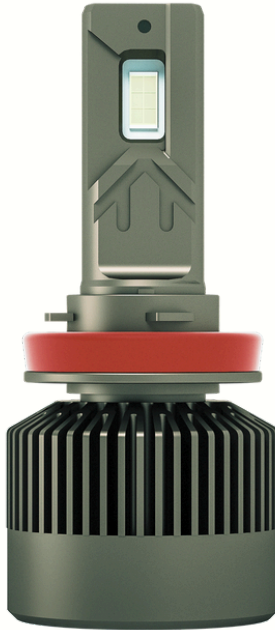
- Reliability tests: As per OEM standard
- IP68 waterproof
- Colour: 6500K Ultra-white
- Operating voltage: 12V, 24V
- Brightness: 19,000 Lumen
- Steady Power: 150W

### Available in:

|    |      |
|----|------|
| H1 | H19  |
| H4 | H27  |
| H7 | 9005 |
| H8 | 9012 |



## W250



### Technical Specs

- Reliability tests: As per OEM standard
- IP68 waterproof
- Colour: 6500K Ultra-white
- Operating voltage: 12V, 24V
- Brightness: 20,000 Lumen
- Steady Power: 180W

### Available in:

|    |      |
|----|------|
| H1 | H19  |
| H4 | H27  |
| H7 | 9005 |
| H8 | 9012 |





## W300



### Technical Specs

- Reliability tests: As per OEM standard
- IP68 waterproof
- Colour: 6500K Ultra-white
- Operating voltage: 12V, 24V
- Brightness: 22,500 Lumen
- Steady Power: 240W

### Available in:

|    |      |
|----|------|
| H1 | H19  |
| H4 | H27  |
| H7 | 9005 |
| H8 | 9012 |



**BLACKCAT.**  
SMART MOBILITY SOLUTIONS

# MOBILE CHARGERS



**Over-Current  
Protection**



**Over-voltage  
Protection**



**Voltage-Detection  
Protection**



**Critical-Voltage  
Protection**



**Over-Temperature  
Protection**



**Over-Lead  
Protection**



**Short-Circuit  
Protection**

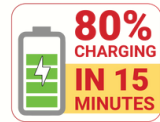


**Over-Charge  
Protection**



# PD-QC TURBOCHARGE PRO

**38W**



OVERHEAT  
PROTECTION



80% IN  
15 MINUTES



USB-C & USB-A



QC & PD  
TECHNOLOGY

## Why select PD-QC Turbocharge Pro ?

- Sleek, elegant design with premium-looking backlit LED illumination.
- USB port, C-type port.
- Cutting-edge tech with USB-C Power Delivery and Qualcomm.
- Operating voltage: 12V, 24V.
- \*Under test conditions.



## JIFFY 30W



FAST CHARGING



5,000 CYCLES TESTED



8 PROTECTIONS

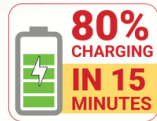
### Why select Jiffy 30W charger?

- Sleek, elegant design with premium-looking backlit LED illumination
- Market leading product
- USB port, C-type port
- Operating current: up to 4.8A
- Operating voltage: 12V, 24V



# CV PD-QC CHARGER

**38W**



OVERHEAT PROTECTION



SUITABLE FOR BUSES, TEMPO TRAVELLERS, SEDAN/ SUV REAR SEAT



USB-C & USB-A



QC & PD TECHNOLOGY

## Why select CV PD-QC fast charger?





- Flat design enables easy installation where hole/ availability is an issue
- Sleek, elegant design with premium-looking blue LED illumination
- Market-leading product for commercial vehicles
- USB-A and USB-C ports
- Cutting-edge tech with USB-C Power Delivery and Qualcomm
- Operating voltage: 12V, 24V
- Customised wiring harness available (if needed)





# CV CHARGER FLAT



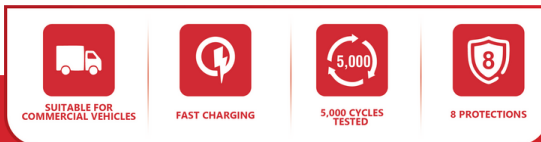
|   |   |  |   |
|---|---|--|---|
| <br>SUITABLE FOR<br>COMMERCIAL VEHICLES | <br>FAST CHARGING | <br>5,000 CYCLES<br>TESTED | <br>8 PROTECTIONS |
|---|---|--|---|

## Why select Blackcat CV Charger Flat?

- Flat design enables easy installation in tight slots as well
- Sleek, elegant design with premium-looking backlit blue LED
- Market-leading product for commercial vehicles
- Dual USB port
- Operating current: up to 3.1A
- Operating voltage: 12V, 24V
- Customized wiring harness available (if needed)



# CV CHARGER FLAT







## Why select Blackcat CV Charger?

- Concealed design, replaces standard cigarette lighter socket in the vehicle
- Market-leading product for commercial vehicles
- Dual USB port
- Operating current: up to 3.1A
- Operating voltage: 12V, 24V
- Customised wiring harness available (if needed)



# RESQ SAFETY CHARGER



|  |  |  |  |
|--|--|--|--|
| <br>SUITABLE FOR CARS | <br>FAST CHARGING | <br>5,000 CYCLES TESTED | <br>8 PROTECTIONS |
|--|--|--|--|

## Why select Blackcat ResQ?

- Patented product
- Safety charger - seatbelt cutter, Tungsten Carbide tip concealed hammer
- Dual USB port
- Operating current: up to 3.1A
- Operating voltage: 12V, 24V



# 4-IN-1 PD CABLE



60W TURBO FAST CHARGING



LAPTOP CHARGING



|         |                            |                    |                             |
|---------|----------------------------|--------------------|-----------------------------|
| <br>60W | <br>1.2 Metre Cable Length | <br>Quick Charging | <br>High Quality Connectors |
|---------|----------------------------|--------------------|-----------------------------|

## Why select Blackcat 4-in-1 Braided Cable?

- This Universal cable can simultaneously charge Android, iOS, and Type C devices.
- This Universal cable is made of High-quality Nylon material makes it resistant to fraying and wear-related damage, more flexible and durable
- Cable is Tangle Free, Rugged, Quick charging, universally compatible, Flexible and of High Quality



## 3-IN-1 BRAIDED CABLE



Genuine accessory approved by Indian and International SUV OEMs



2.1A  
CARRYING CAPACITY



1.2 METRE  
CABLE LENGTH



QUICK CHARGING



HIGH QUALITY  
CONNECTORS

### Why select Blackcat 3-in-1 Braided Cable?

- This universal cable can simultaneously charge Android, iOS, and Type C devices.
- This universal cable is made of high-quality nylon material, making it resistant to fraying and wear-related damage, more flexible and durable.
- The 3-in-1 charging cable is tangle-free, rugged, quick charging, universally compatible, flexible, and of high quality.
- It has a sleek, highly durable, premium metal housing with a nylon braided cable.

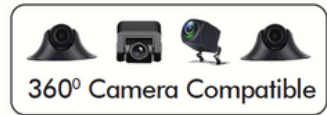


**BLACKCAT**  
SMART MOBILITY SOLUTIONS

# ANDROID INFOTAINMENT



# T5R - AND003/006



**Key Specs**

- Processor: T5 Cortex A53 4+4 Core 1.5GHz
- RAM: 2GB; Memory: 32GB
- Screen size: 9" / 10.1"



Q-LED SCREEN



BLUETOOTH 5.1



SPEAKER OUTPUT: 4\*45 WATT



RUGGED TESTING: -20°C TO +70°C



32 EQ SEGMENT DSP

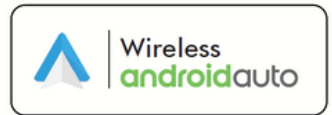
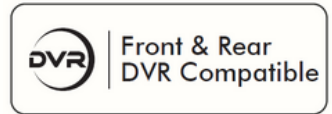




# T5R - AND004



## Turbo Performance



## Key Specs

- Processor: T5 Cortex A53 4+4 Core 1.5GHz
- RAM: 4GB; Memory: 64GB
- Screen size: 9"



Q-LED SCREEN



BLUETOOTH  
5.1



SPEAKER OUTPUT:  
4\*45 WATT



RUGGED TESTING:  
-20°C TO +70°C



32 EQ  
SEGMENT DSP



# TS10 - AND007



- Processor: TS10 Octacore 7862 1.8GHz
- RAM: 4GB; Memory: 64GB



## Turbo Performance

- ✓ INSTANT TOUCH RESPONSE
- ✓ QUICK APP SWITCH
- ✓ STABLE OPERATION
- ✓ MORE FUN WITH TECH



- ✓ Voice operated
- ✓ Powered by Google Assistant AI
- ✓ 9 Indian languages



9" Q-LED SCREEN



BLUETOOTH 5.1



SPEAKER OUTPUT: 4\*50 WATT



RUGGED TESTING: -20°C TO +70°C



48 EQ SEGMENT DSP



**BLACKCAT**  
SMART MOBILITY SOLUTIONS

# TYRE INFLATORS



# HERCULES<sup>2</sup>



**2X** Cylinder Power



PREMIUM COPPER  
WINDING MOTOR FOR  
LONG LIFE



NO JACK REQUIRED  
TO INFLATE.



STURDY METAL  
BODY



THICK, BRAIDED,  
HOSE

## Why select Hercules<sup>2</sup>?

- Powerful 150W twin-cylinder inflator: fills up SUV/Sedan R15 tyre in under 2 minutes
- Twin cylinder design fills air in half the time
- Rubber pads for low-noise operation
- Threaded Spring Valve for faster & leak-proof inflation
- Superior build quality that inflates 4 tires without over-heating
- Sturdy metal body
- 1 Year Warranty with Lifelong customer support.



# HERCULES X



PREMIUM COPPER WINDING MOTOR FOR LONG LIFE

NO JACK REQUIRED TO INFLATE

QUICK HEAT DISSIPATION

SLICK, LIGHTWEIGHT & EASY TO STORE

THICK, BRAIDED, HEAT PROOF

## Why select Hercules-X?

- ▶ 150W powerful inflator
- ▶ Threaded Spring Valve for faster & leak-proof inflation
- ▶ 10ft (3.3m) long wire
- ▶ Bright LED torch-light
- ▶ Superior build quality ensures continuous inflation of all 4 tyres, without risk of overheating/motor failure
- ▶ 1 Year Warranty with Lifelong customer support.



# HERCULES SMART



PREMIUM COPPER  
WINDING MOTOR FOR  
LONG LIFE



NO JACK REQUIRED  
TO INFLATE



QUICK HEAT  
DISSIPATION



SLEEK, LIGHTWEIGHT  
& EASY TO STORE



THICK, BRAIDED,  
HEAT PROOF

## Why select Hercules Smart?

- Compact and lightweight
- Threaded Spring Valve for faster & leak-proof inflation
- 10ft (3.3m) long wire
- Bright LED torch-light
- Superior build quality ensures continuous inflation of all 4 tyres, without risk of overheating/motor failure
- 1 Year Warranty with Lifelong customer support.



# HERCULES



|  |  |  |  |
|--|--|--|--|
|  <p><b>PREMIUM COPPER WINDING MOTOR FOR LONG LIFE</b></p> |  <p><b>NO JACK REQUIRED TO INFLATE.</b></p> |  <p><b>METAL</b><br/><b>STURDY METAL BODY</b></p> |  <p><b>THICK, BRAIDED, HOSE</b></p> |
|--|--|--|--|

## Why select Hercules?

- Rubber pads for low noise operation
- Threaded Spring Valve for faster & leak-proof inflation
- Superior build quality that inflates 4 tyres without over-heating
- Sturdy Metal Body
- 1 Year Warranty with Lifelong customer support.
- Analogue Gauge





**BLACKCAT**  
SMART MOBILITY SOLUTIONS

# SECURITY SYSTEMS



# CENTRAL LOCKING SYSTEM NSA



## Why select Blackcat Central Locking Systems?

- India's 1st remote locking car security system company
- Over 4 lakh cars secured - since 1993
- High decibel alarm 110dB
- NSA 4D: suitable for all cars
- NSA 1D: suitable for cars where driver door lock controls locking/ unlocking of other door locks
- OEM-style remote designs
- 3 years warranty



**BLACKCAT**  
SMART MOBILITY SOLUTIONS

**CAR-FRIDGE**



## AT-18



### Why select AT-18

- Smart engineering and efficient manufacturing ensure affordable pricing.
- Serves dual purpose of cooling as well as heating food and beverages
- Can cool up to 30°C below car's cabin temperature (up to 0°C) and heats up to +65°C.
- Can fit bottles of 750ml or 6 cans of 500ml.
- Connect the fridge to vehicle's cigarette lighter socket (12V or 24V DC) or our domestic plug point (230V AC), set the mode to Cooling or eating.No installation needed.
- The fridge consumes even lesser power than headlight lamps. Additionally, it comes with an intelligent battery protection mechanism which ensures safety from over-draining your vehicle battery.
- Ideal for Cars/SUVs



Genuine accessory approved by Indian and International SUV OEMs



PROFESSIONAL COOLING PRODUCT, DESIGNED FOR THE INDIAN CONDITIONS.

FRIDGE-FREEZER

LOW POWER CONSUMPTION

OPERATES FROM A CAR CIGARETTE LIGHTER SOCKET

## Why select CB-18?

- Smart engineering and efficient manufacturing ensure affordable pricing
- Can deep freeze up to  $-18^{\circ}\text{C}$  regardless of the outside temperature
- Connect the fridge to vehicle's cigarette lighter socket (12V or 24V DC) or our domestic plug point (230V AC)
- Consumes power lesser than a headlight lamp
- Genuine accessory approved by European OEM car manufacturer

Suitable for cars, camping, cold chain delivery of meat, ice cream, dairy products, storing and transporting medical kits, bio samples, blood bags, plasma samples, vaccines, etc.



**BLACKCAT**  
SMART MOBILITY SOLUTIONS

# REVERSE CAMERA





# AHD STRAWHAT CAMERA



✓ Number plate mounting

✓ 170°/120° viewing angle

✓ IP68 protection for dust and water

✓ Night-vision with photosensitive chip





# AHD BUMPER CAMERA



- ✓ Seamless mounting with bumper
- ✓ 170°/120° viewing angle
- ✓ IP68 protection for dust and water
- ✓ Night-vision with photosensitive chip



## LED CAM F



✓ Seamless mounting with bumper

✓ 120° viewing angle

✓ IP68 protection for dust and water

✓ Night-vision with photosensitive chip



# BUS CAMERA



**120°**  
Viewing angle



| CAMERA TECH SPECS                   |         |
|-------------------------------------|---------|
| Camera type                         | IRLED   |
| Camera resolution                   | 640x480 |
| Camera night vision supported (Y/N) | Y       |
| Camera waterproofing                | IP67    |
| Lens viewing angle                  | 120°    |

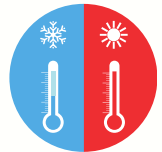


**BLACKCAT**  
SMART MOBILITY SOLUTIONS

# MONITORS



# FLIP-DOWN MONITOR



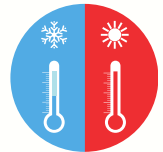
Rugged testing  
-20°C to +70°C

| TECHNICAL SPECIFICATION |              |
|-------------------------|--------------|
| Operating Voltage       | DC 12V       |
| Current                 | 2.0 ± 0.1A   |
| Video Formats           | PAL/NTSC     |
| Aspect Ratio            | 16:9         |
| Resolution              | 1366X768 RGB |





# 7" MONITOR



Rugged testing  
-20°C to +70°C

| VIDEO MONITOR TECH SPECS      |                      |
|-------------------------------|----------------------|
| Monitor type                  | TFT LCD (standalone) |
| Mounting type                 | Vehicle Dashboard    |
| Auto-brightness control       | N                    |
| Anti-glare auto-dimming (Y/N) | N                    |
| Modes supported               | PAL & NTSC           |
| PAL & NTSC auto-switching     | Y                    |
| Resolution                    | 1440x234 dots        |





9899-0555-88



info@blackcat.in



Bajaj Autotronix India  
D-64, Udyog Vihar Ph-6,  
Sector-37, Gurgaon-122001

Follow us for latest product launches:

